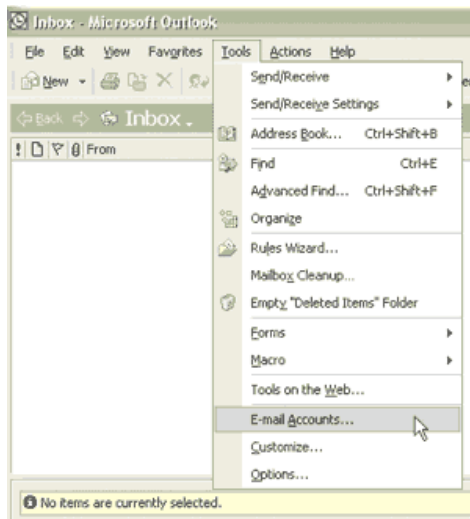
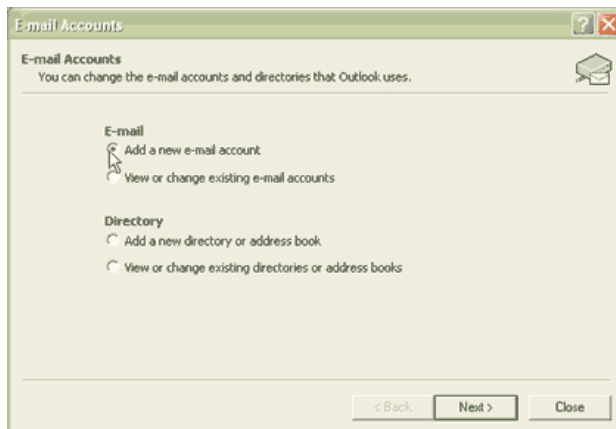


Outlook 2002/XP Email Setup Instructions

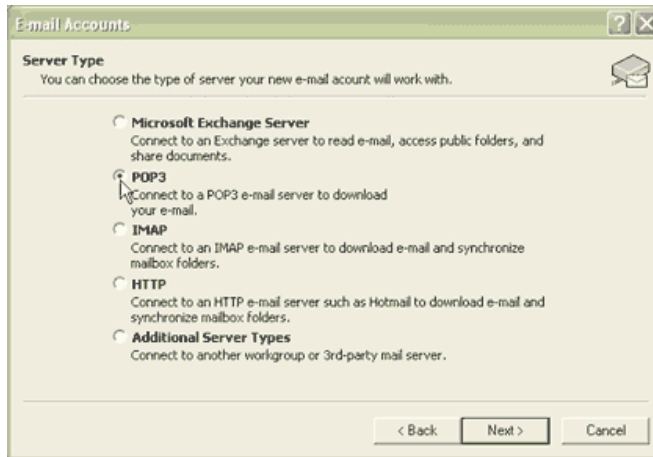
1. From the **Tools** menu, choose **Email Accounts**.



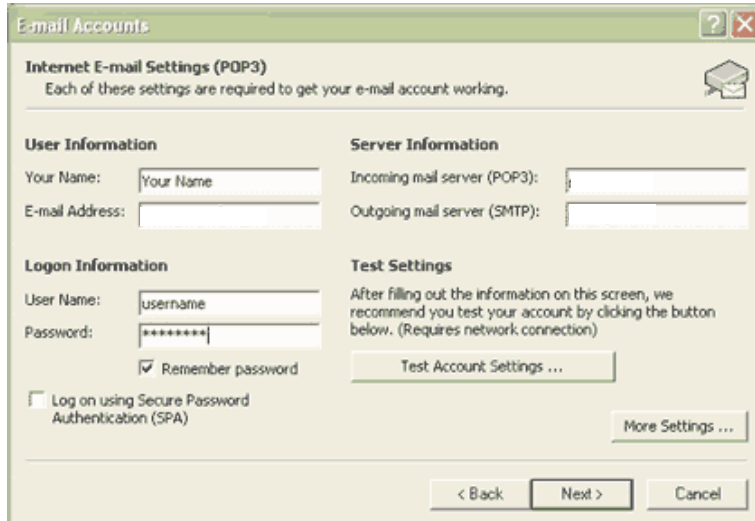
2. Choose **Add a new e-mail account** and then click next.



3. Choose **POP3** for the type of mail server and then click next.



4. Type your name in the **Your Name:** field.
5. Type your email address in the **E-mail Address**
6. In the **Incoming mail server (POP3):** type "mail.quadlink.net".
7. In the **Outgoing mail server (SMTP):** type "mail.quadlink.net".
8. In the **User Name:** type your username. (Please remember this is case sensitive so if your username is all lower case you must type it that way.)
9. In the **Password:** enter your password.
10. Make sure that Log on using Secure Password Authentication (SPA) **is not checked.**
11. Click on next once you have completed these 7 steps above.



12. You have now completed your email account setup. Click on finish and you are ready to retrieve your email by clicking on the Send and Receive button.

